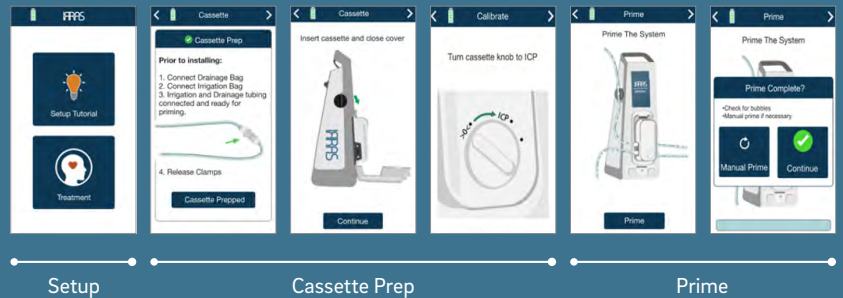


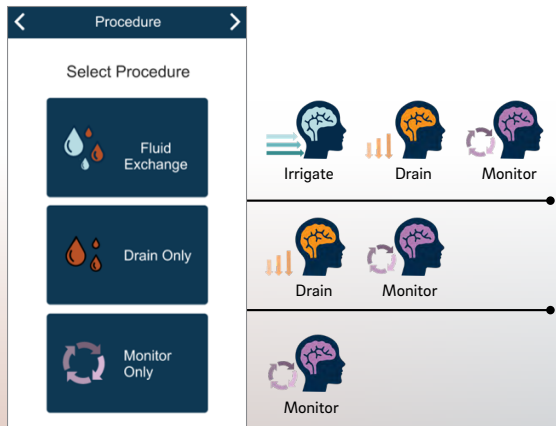
SET UP

Once the IRRAflow Control Unit is plugged in and properly mounted on the IV pole, turn on the system by pressing the power button. Once powered on, the system will progress to the Setup Option Screen. Follow the step-by-step Setup Tutorial to prep and insert the cassette, calibrate, and prime the system.



PROCEDURE SELECTION

Based on the patient's clinical condition, the physician will select one of the 3 procedure options: **Fluid Exchange**, **Drain Only**, or **Monitor Only**.



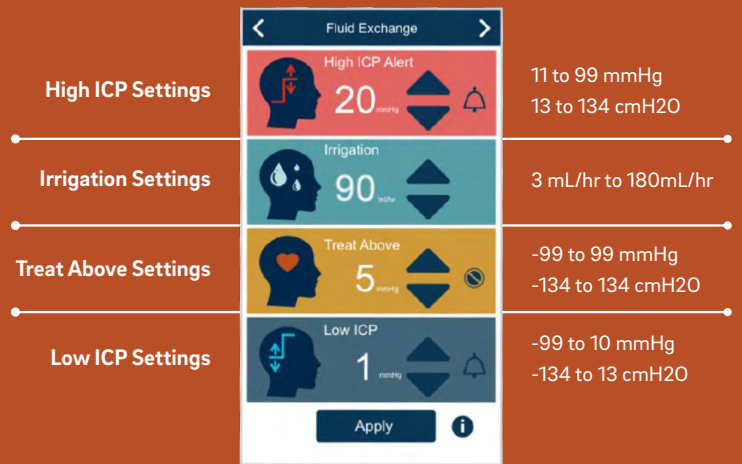
BUBBLE SENSOR

The "Air Bubble Detected" alarm is triggered by the Bubble Sensor located on the side of the Control Unit under the irrigation bag.

When this alarm appears, first check the tubing to ensure it has not dislodged from the air bubble sensor. Then, check to see if the irrigation bag needs to be replaced.

SETTINGS & ALARMS

Once the procedure is selected, adjust the ICP settings to set your high and low ICP measurements that will trigger audible alarms. Then, adjust the Irrigation and Treat Above settings based on physician orders.



High ICP

If the patient's ICP value exceeds the alarm value, **IRRIGATION** will stop



Automated Irrigation



Controlled Drainage

Low ICP

If the patient's ICP value goes below the alarm value, **IRRIGATION** and **DRAINAGE** will stop



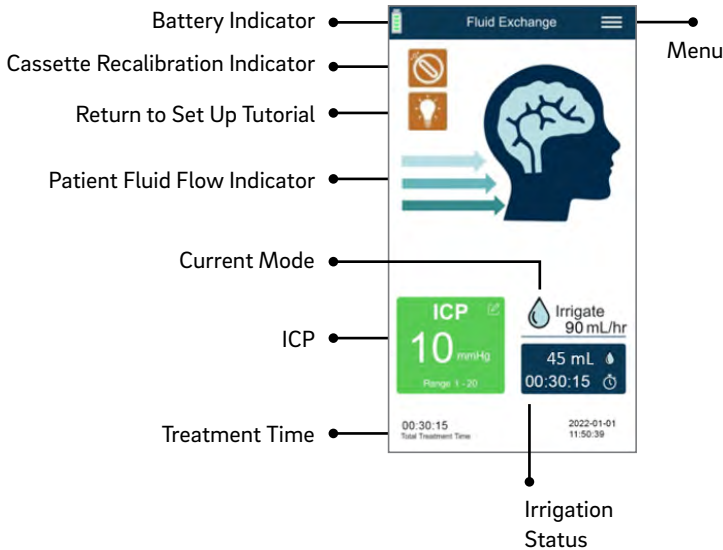
Automated Irrigation



Controlled Drainage

SCREEN ICON KEY

The IRRAflow system utilizes the intuitive treatment displays and icons labeled below to improve ease of use.



CONTROL UNIT

1. Measuring Scale
2. Interactive Screen Display
3. Hand Release Lever
4. Height Window Display
5. Drainage Collection Bag



DRAINAGE BAG HEIGHT

The IRRAflow System features a Drainage Collection System that provides a simple solution for fluid management.

Per Physician's orders, adjust the height of the drainage bag on the sliding scale by squeezing the drainage bag hand release lever. Note that the exact height of the drainage bag will be shown in the window display. To allow for more control of drainage, raise the drainage bag height. To increase drainage, lower the bag height.

CUSTOMER SERVICE

US 1-800-946-0458
 EU +31-20-210-1098
 US.customerservice@irras.com
 Global.customerservice@irras.com



www.irras.com